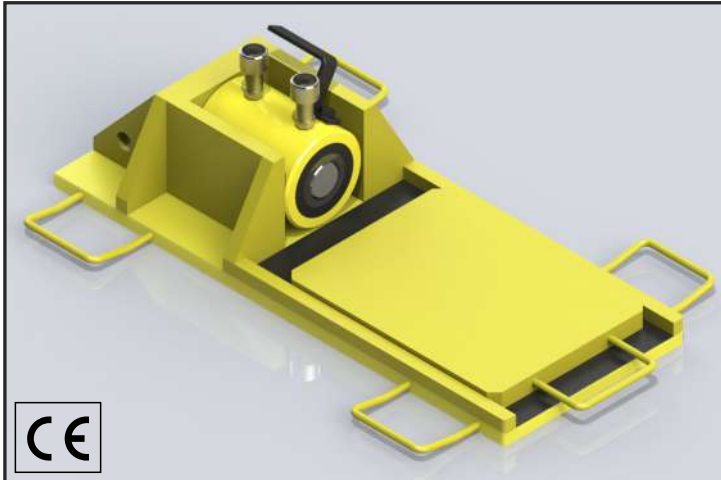


AS500 ALIGNMENT SHOES



AS500 Specifications

Full System Capacity (4 Alignment Shoes)	500 ton 454 tonne
Alignment Shoe Capacity (each)	125 ton 113 tonne
Cylinder Capacity	50 ton 45.4 tonne
Cylinder Stroke	2" or 4" 50 mm or 100 mm
Cylinder Hydraulic Couplers	Enerpac CR400 (female)
Working Height	1.5" 38 mm
System Coefficient of Friction	15-20%
Slide Surface Material	Graphite
Maximum Slope	+/- 2%
Maximum Operating Pressure	10,000 psi 700 bar

The AS500 Alignment Shoe system makes final precise positioning of a load simple and accurate. Each component is hand-portable, allowing transportation, set-up, and mobilization with minimal personnel and equipment.

- 500 ton (454 tonne) system capacity
- 1.5" (38 mm) working height
- Durable rubber base prevents unwanted movement



Full system is stored in a compact steel box for convenience & easy transportation

AS500 Dimensions	Length	Width	Height	Weight
Alignment Shoe Base	34" 860 mm	20" 510 mm	6" 150 mm	110 lb 50 kg
Slider Plate	17" 440 mm	10.375" 260 mm	0.75" 19 mm	25 lb 11 kg
Push Cylinder (Retracted)	5" 130 mm	5" 130 mm	7" 183 mm	37 lb 17 kg
Storage Box	34" 860 mm	34" 860 mm	22" 560 mm	1075 lb 488 kg